

Meyerhoff Chemistry Building

First Level

Note your location on the plan and follow arrows to nearest marked exit or exit stair.

Elevators are not to be used in an emergency.

For Fire and Medical Emergencies call 911.

For campus police call 410-455-5555.

Emergency Egress



Secondary Exit Route



Emergency Pull Station



AED Location



Fire Extinguisher Station



Note your location on the plan and follow arrows to nearest marked exit or exit stair.

Elevators are not to be used in an emergency.

For Fire and Medical Emergencies call 911.

For campus police call 410-455-5555.

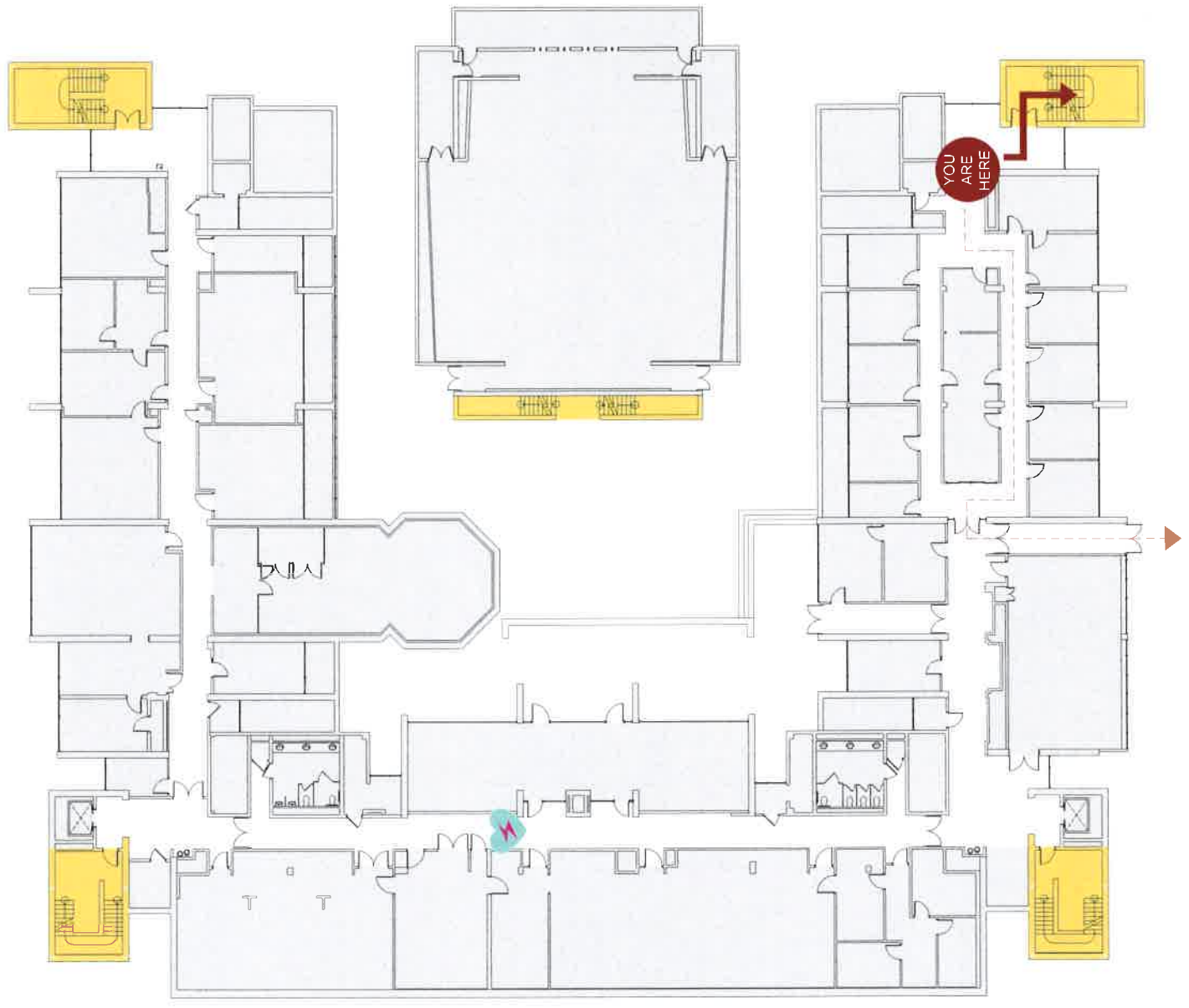
Emergency Egress

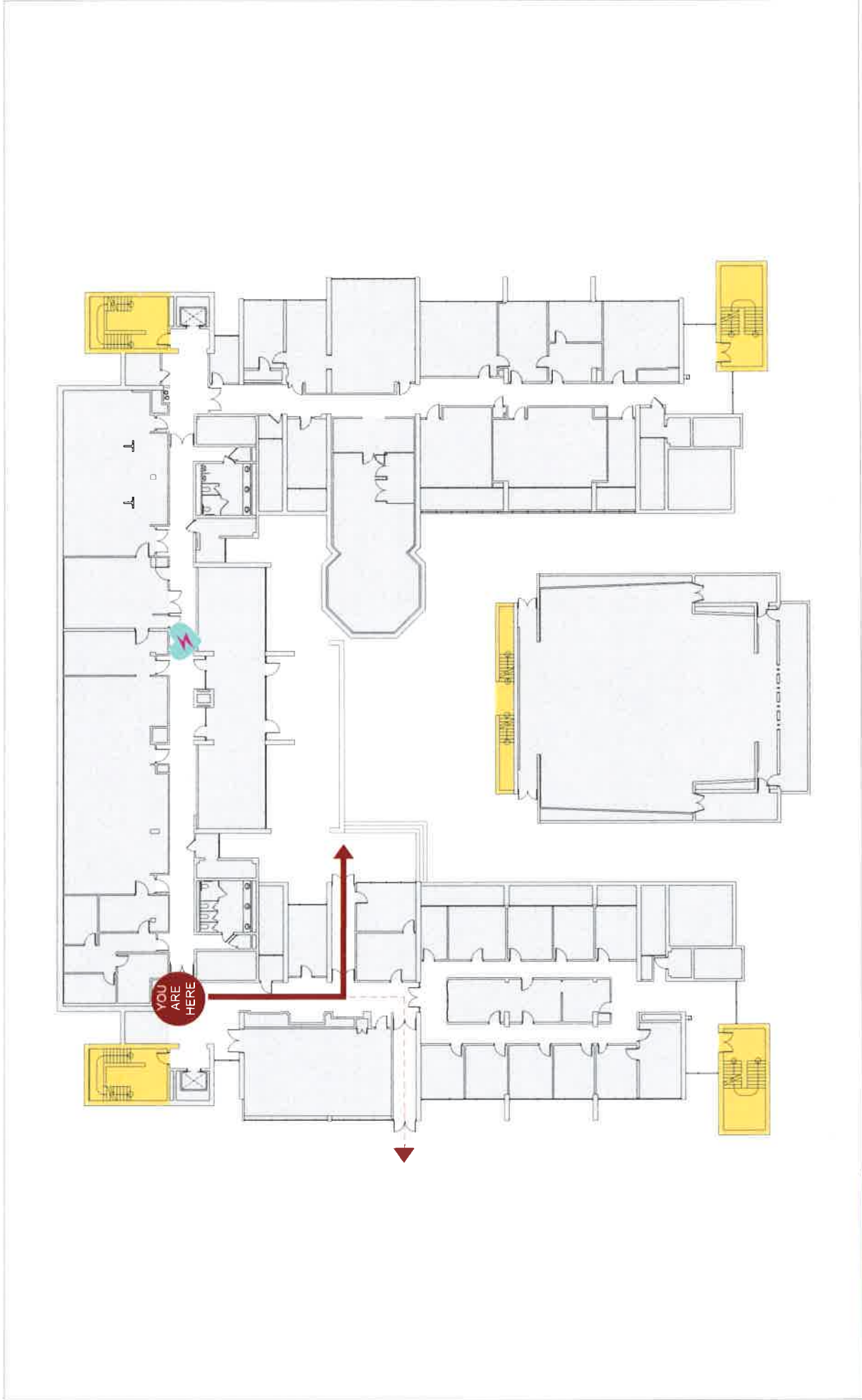
Secondary Exit Route

Emergency Pull Station

AED Location

Fire Extinguisher Station





Meyerhoff Chemistry Building

First Level

Note your location on the plan and follow arrows to nearest marked exit or exit stair.

Elevators are not to be used in an emergency.

For Fire and Medical Emergencies call 911.

For campus police call 410-455-5555.

Emergency Egress



Emergency Pull Station



AED Location

Secondary Exit Route



Fire Extinguisher Station

Note your location on the plan and follow arrows to nearest marked exit or exit stair.

Elevators are not to be used in an emergency.

For Fire and Medical Emergencies call 911.

For campus police call 410-455-5555.

Emergency Egress

Secondary Exit Route

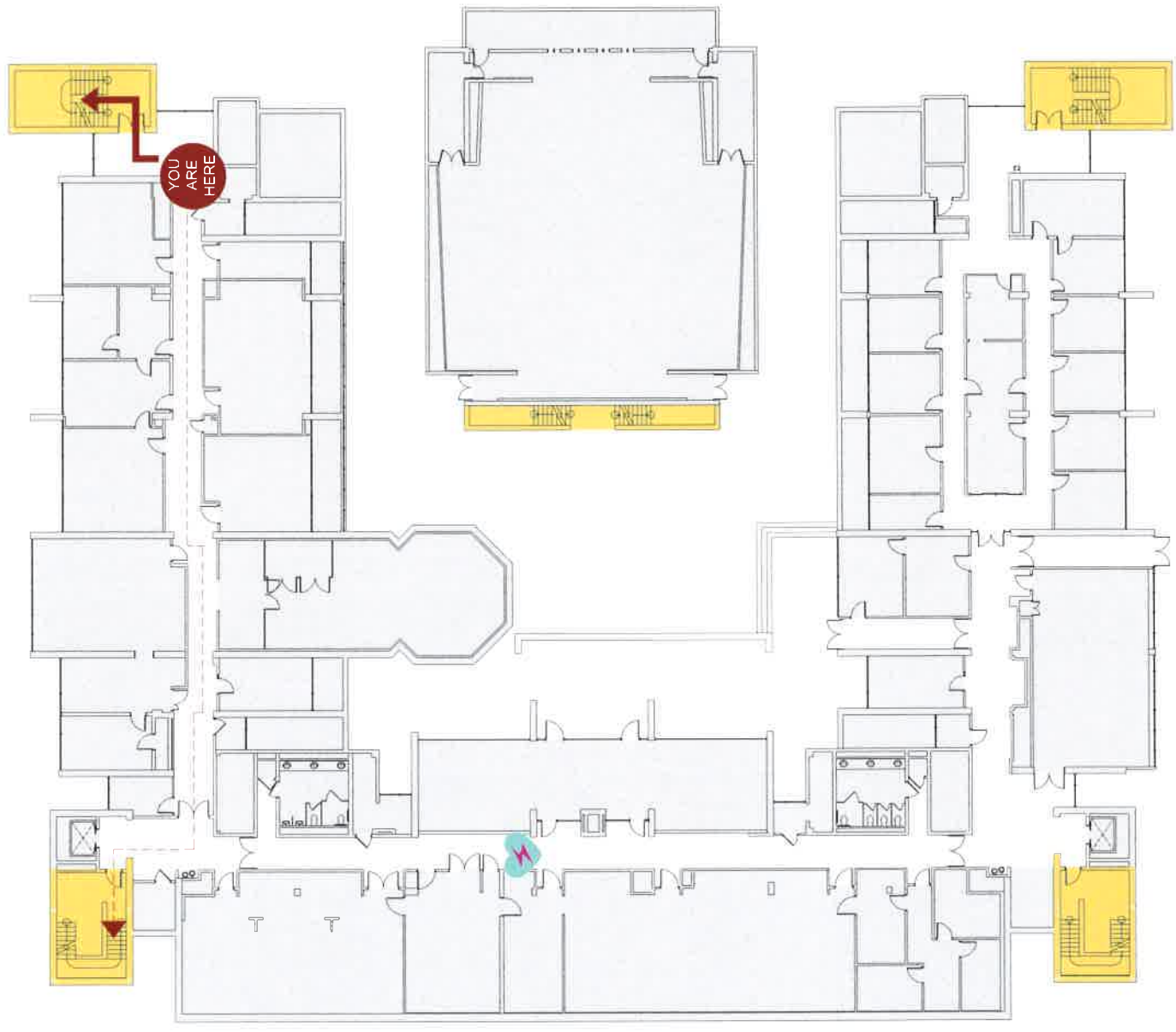
Emergency Pull Station

AED Location

Fire Extinguisher Station

Meyerhoff Chemistry Building

First Level



Note your location on the plan and follow arrows to nearest marked exit or exit stair.

Elevators are not to be used in an emergency.

For Fire and Medical Emergencies call 911.

For campus police call 410-455-5555.

Emergency Egress



Secondary Exit Route



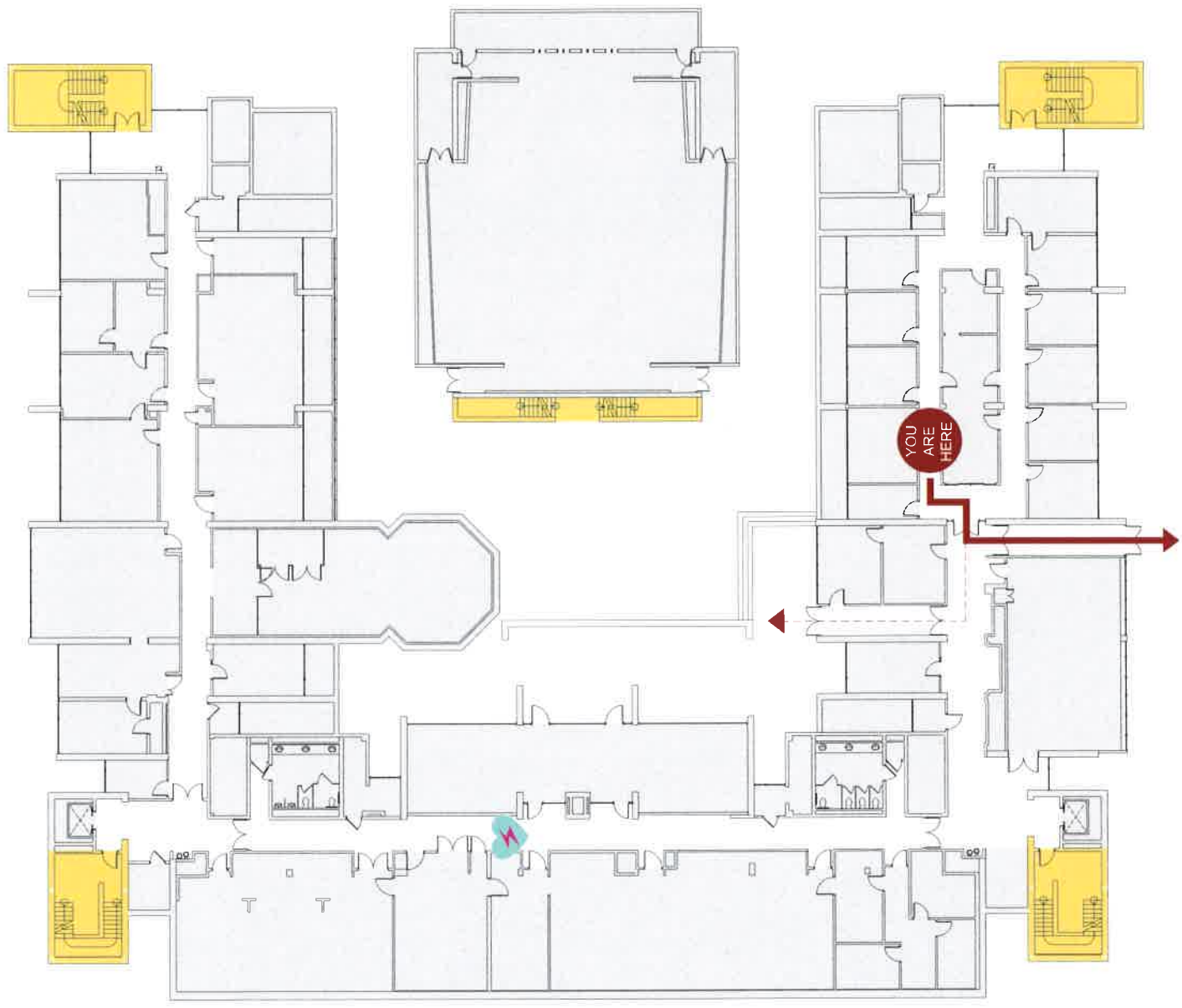
Emergency Pull Station



AED Location



Fire Extinguisher Station



Information & Technology Building Second Level

Note your location on the plan and follow arrows to nearest marked exit or exit stair.

Elevators are not to be used in an emergency.

For Fire and Medical Emergencies call 911.

For campus police call 410-455-5555.

Emergency Egress



Secondary Exit Route



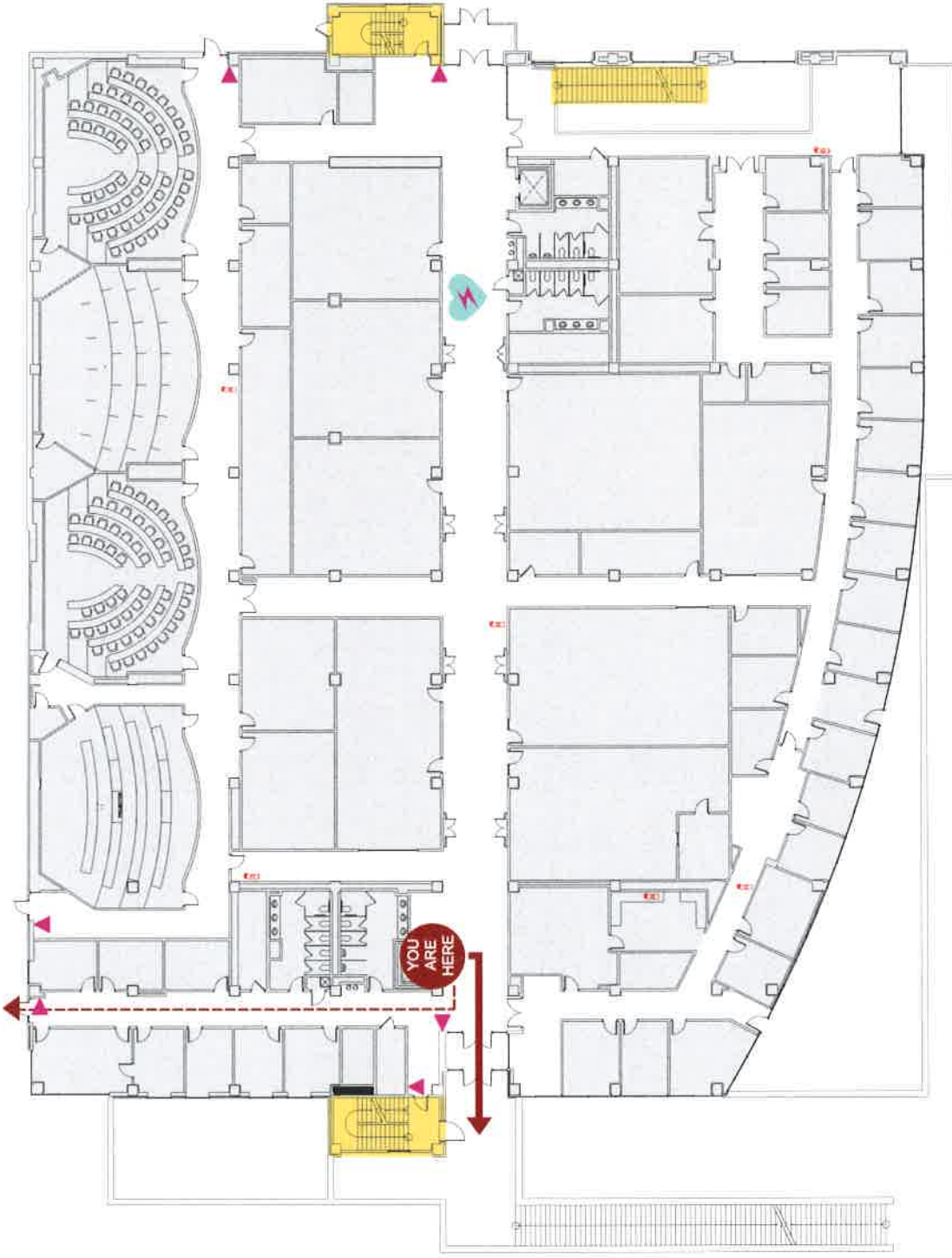
Emergency Pull Station

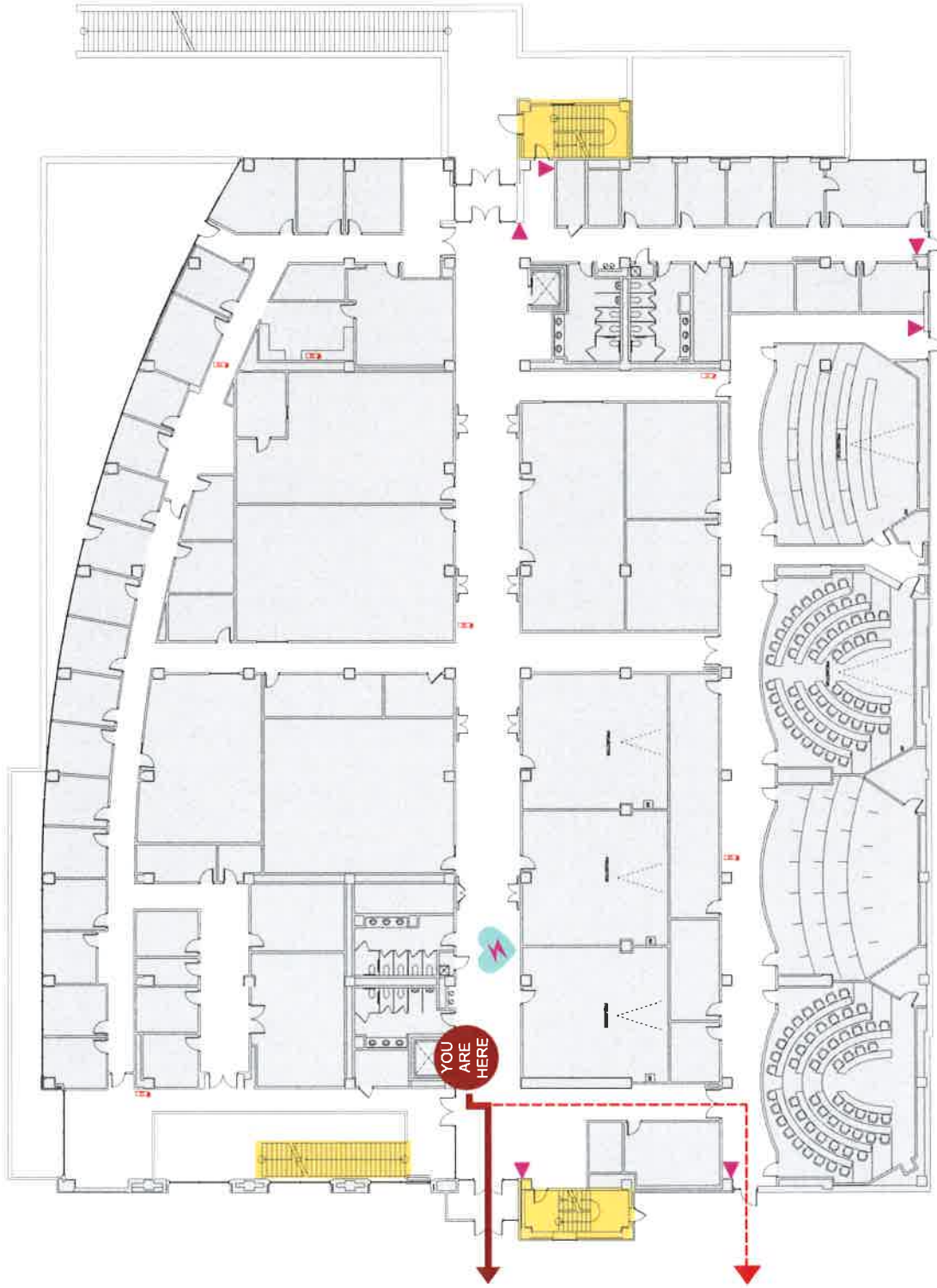


AED Location



Fire Extinguisher Station





Information Technology & Engineering Building Second Level

Note your location on the plan and follow arrows to nearest marked exit or exit stair.

Elevators are not to be used in an emergency.

For Fire and Medical Emergencies call 911.

For campus police call 410-455-5555.

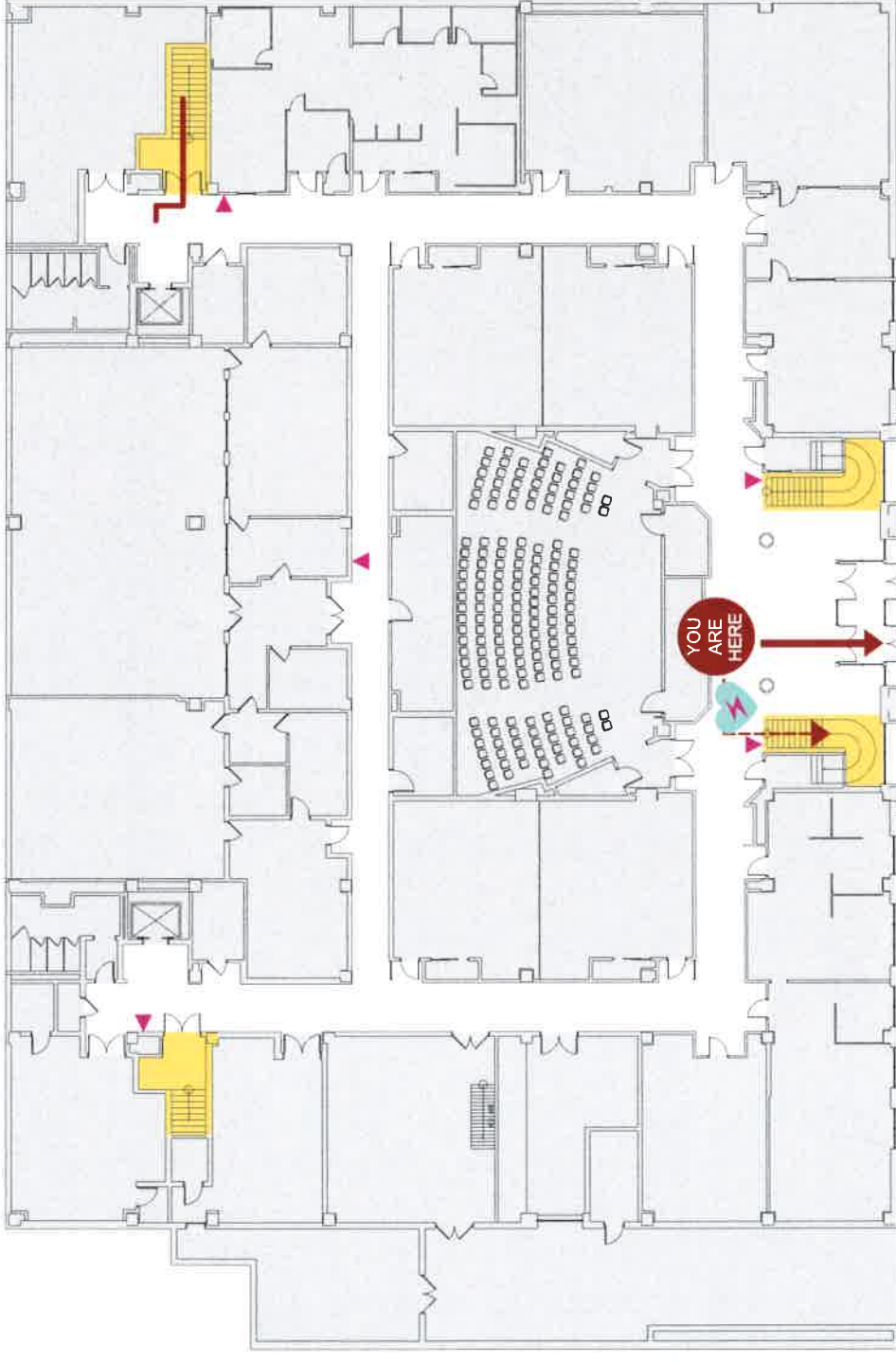
➔ Emergency Egress

---➔ Secondary Exit Route

▼ Emergency Pull Station

⚡ AED Location

🧯 Fire Extinguisher Station



Engineering Building

Lower Level

Note your location on the plan and follow arrows to nearest marked exit or exit stair.

Elevators are not to be used in an emergency.

For Fire and Medical Emergencies call 911.

For campus police call 410-455-5555.

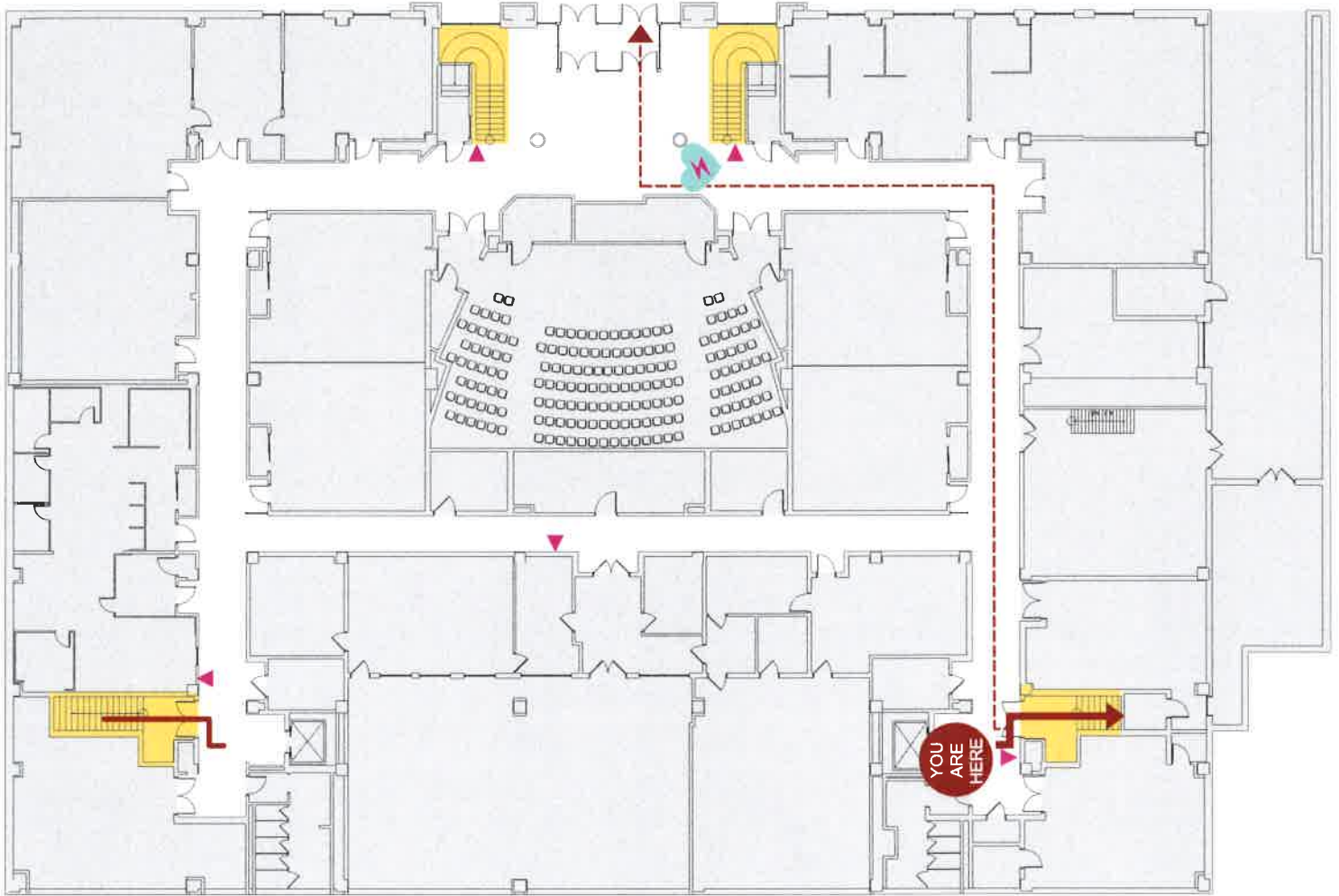
Emergency Egress

Secondary Exit Route

Emergency Pull Station

AED Location

Fire Extinguisher Station



Note your location on the plan and follow arrows to nearest marked exit or exit stair.

Elevators are not to be used in an emergency.

For Fire and Medical Emergencies call 911.

For campus police call 410-455-5555.

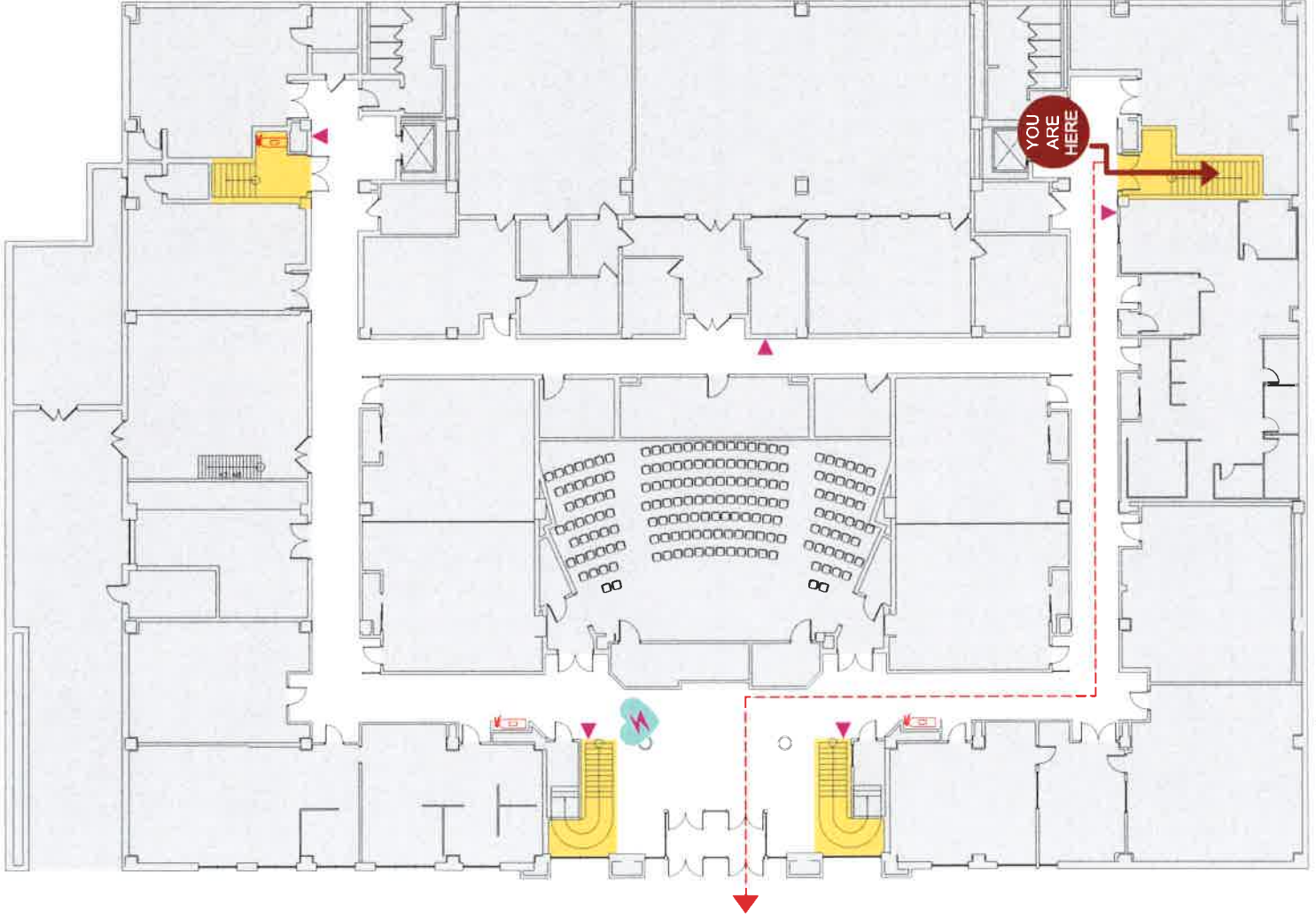
Emergency Egress

Secondary Exit Route

Emergency Pull Station

AED Location

Fire Extinguisher Station



Note your location on the plan and follow arrows to nearest marked exit or exit stair.

Elevators are not to be used in an emergency.

For Fire and Medical Emergencies call 911.

For campus police call 410-455-5555.

Emergency Egress

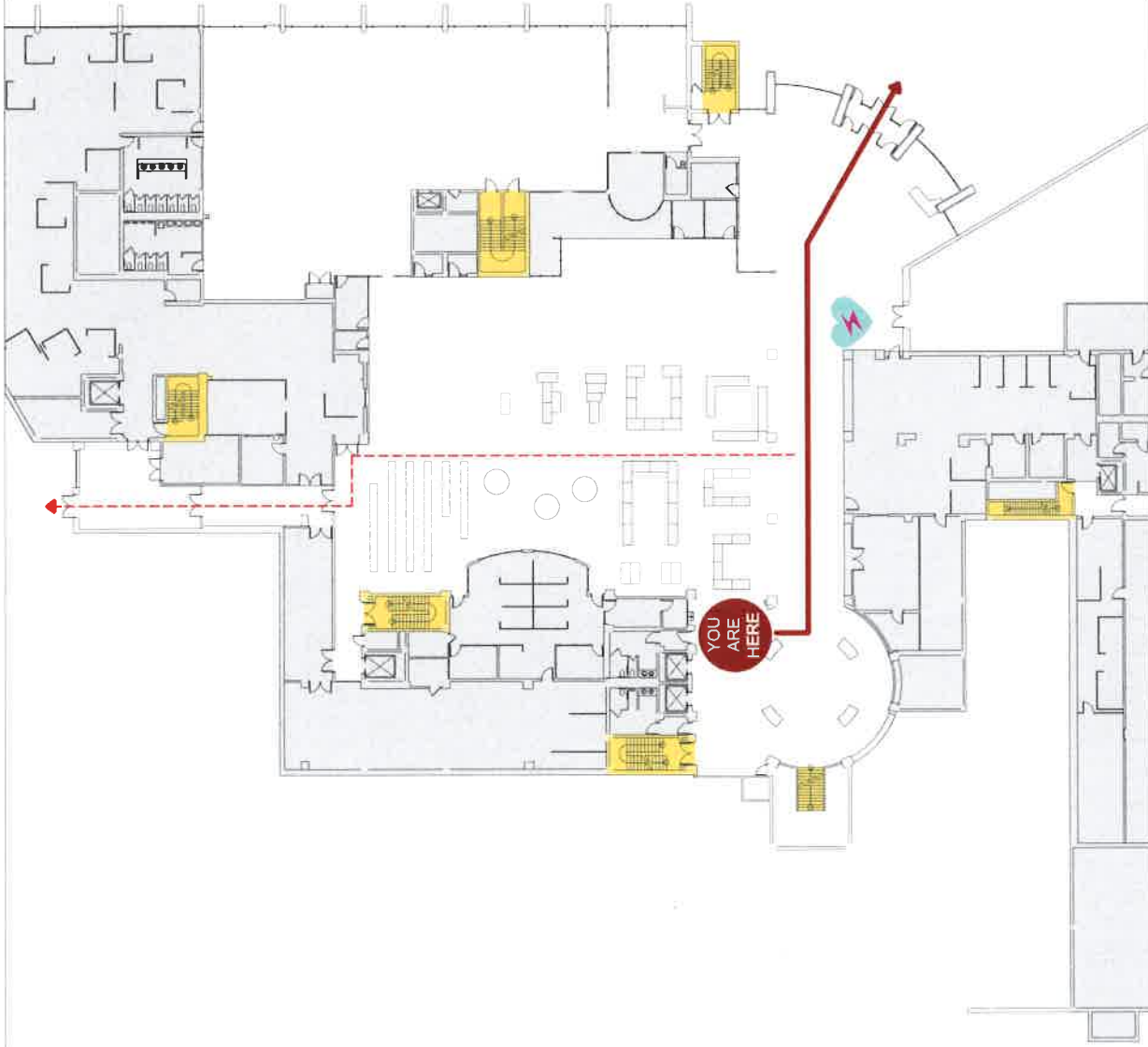
Secondary Exit Route

Emergency Pull Station

AED Location

Fire Extinguisher Station

Engineering Building
Lower Level



Albin O. Kuhn Library & Gallery

First Level

Note your location on the plan and follow arrows to nearest marked exit or exit stair.

Elevators are not to be used in an emergency.

For Fire and Medical Emergencies call 911.

For campus police call 410-455-5555.

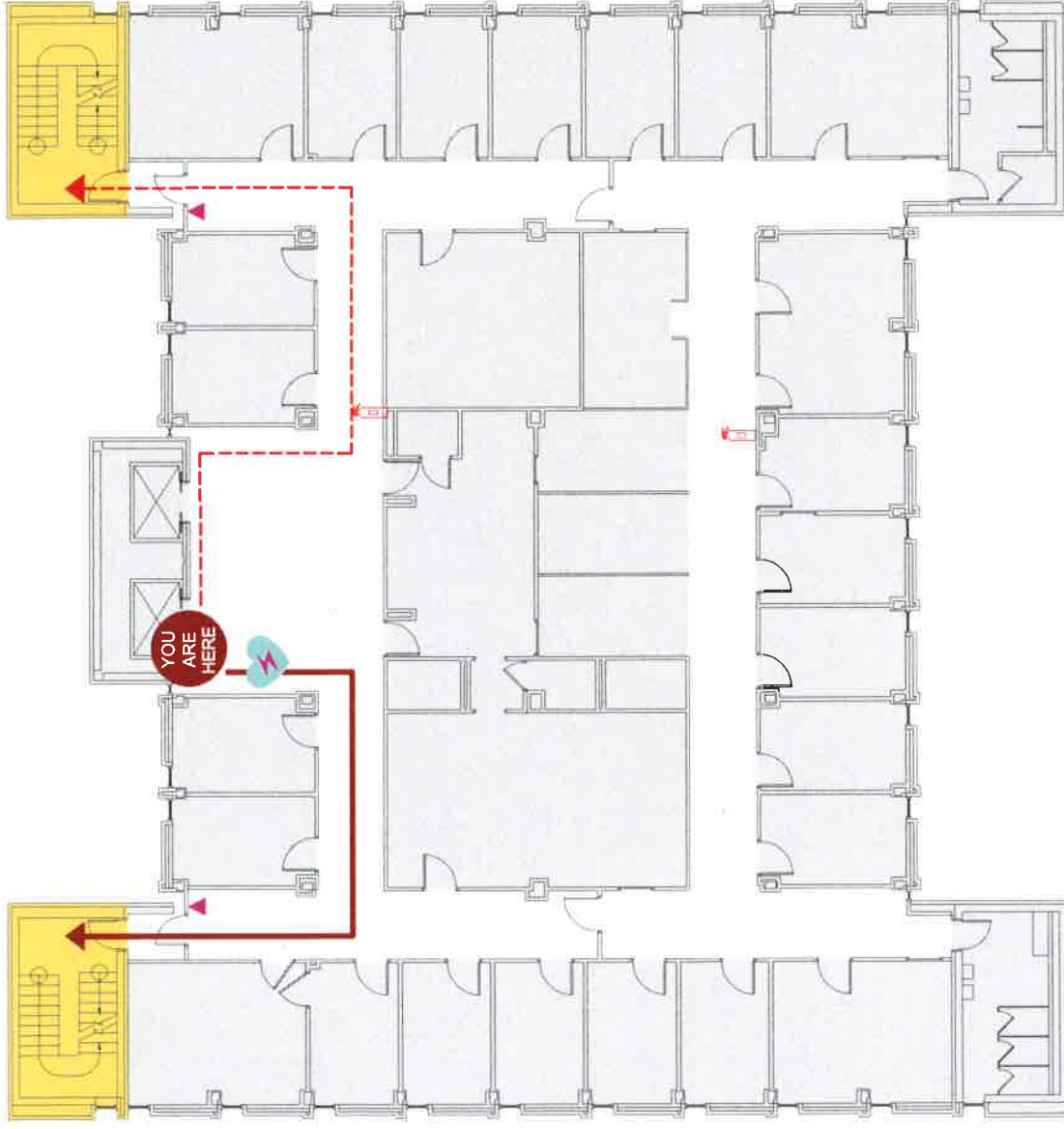
Emergency Egress

Secondary Exit Route

Emergency Pull Station

AED Location

Fire Extinguisher Station



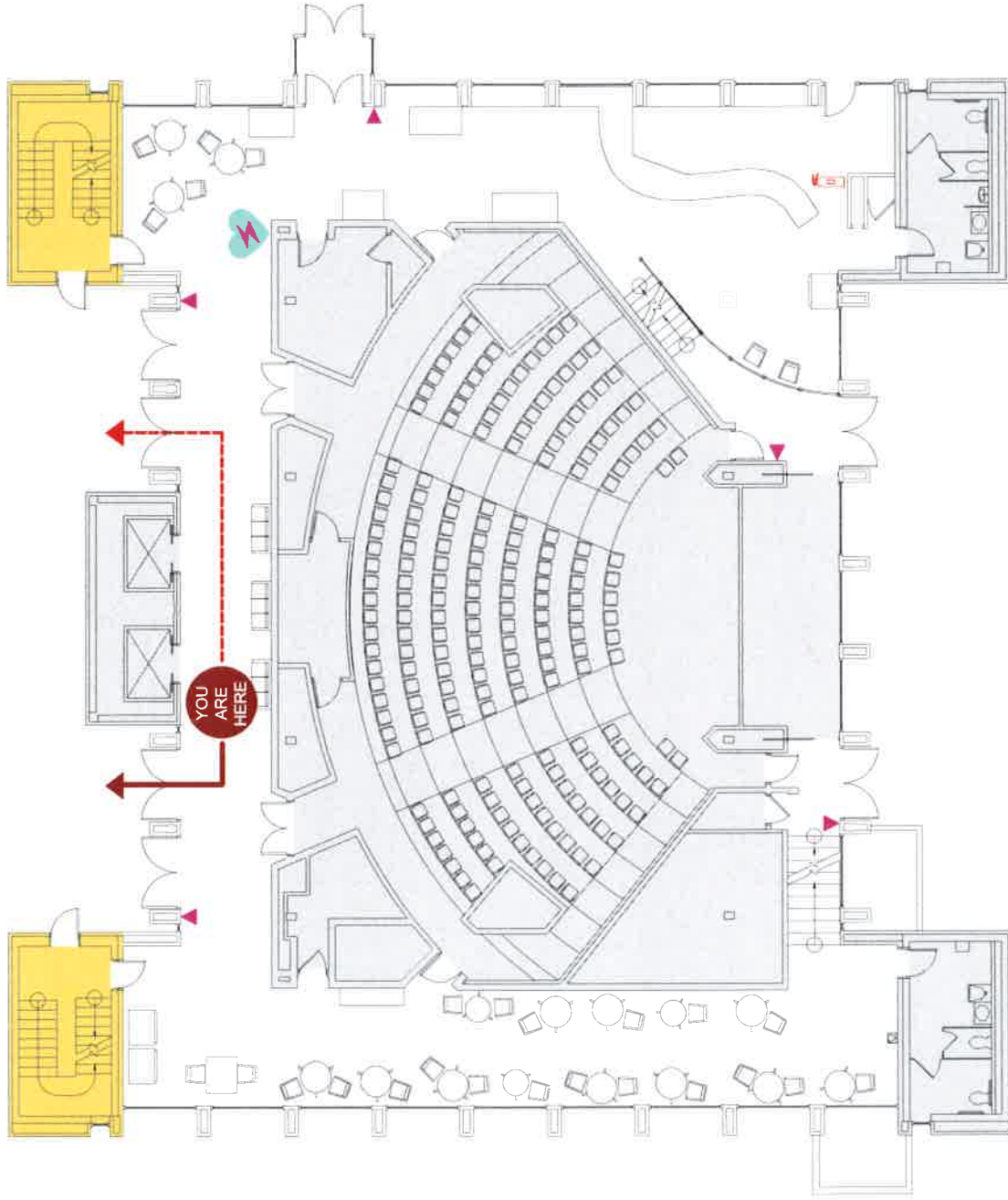
Note your location on the plan and follow arrows to nearest marked exit or exit stair.

Elevators are not to be used in an emergency.

For Fire and Medical Emergencies call 911.
For campus police call 410-455-5555.

- Emergency Egress
- Emergency Pull Station
- Secondary Exit Route
- AED Location
- Fire Extinguisher Station

Administration Building
Fifth Level



Administration Building

First Level

Note your location on the plan and follow arrows to nearest marked exit or exit stair.

Elevators are not to be used in an emergency.

For Fire and Medical Emergencies call 911.

For campus police call 410-455-5555.

Emergency Egress



Secondary Exit Route



Emergency Pull Station



AED Location



Fire Extinguisher Station

